

The logo for ideambox, featuring the word "ideambox" in a bold, orange, sans-serif font. The logo is positioned on the left side of the slide, partially overlapping a large, stylized orange graphic that resembles a diamond or a rounded square with multiple concentric, slightly offset lines.

# Designing Success. Asia Manufacturing Experts.

Company Deck

2/22/2024



# Ideambox

[About](#) | [Proposition](#) | [Clients](#)

# About

- We combine strategic product engineering with seamless Asia-based manufacturing solutions.
- Our core expertise in advanced optimization techniques, such as lightweighting and design for manufacturability, ensures robust performance, cost-effectiveness, and streamlined time-to-market.
- Built on a foundation of industrial design ingenuity and global experience, we guide your product innovations to global market success.



# Proposition

- Partner with Ideambox and achieve engineering excellence within your budget. Gain competitive advantage through our problem-solving capabilities across materials optimization, simulation-driven design, and manufacturing network management. Whether you face performance challenges, production roadblocks, or seek enhanced sustainability in your product design, Ideambox delivers practical, actionable solutions to ensure your success.



# Clients



# Our Team



Pedro Albaladejo

**CEO  
FOUNDER**

- MBA and Industrial Engineering background, he brings 20 years of experience in Automotive and Aeronautic industries across Europe, Asia, and North America.
- Served prestigious clients such as PSA, Volvo, GM, Ford, Toyota, Nissan, GWM, Geely, and Airbus.
- His extensive cross-continental experience provides valuable insights into diverse markets and cultures.



Chigyu Ahn

**SALES  
DIRECTOR**

- With 30 years in the automotive industry, he brings unparalleled expertise to every project.
- Expert in gear shifter technology, he ensures top-notch performance and innovation.
- With extensive global sales experience, he navigates diverse markets with finesse.



Sylvia Wu

**SOURCING  
MANAGER**

- Leveraging Taiwanese supply chain expertise, she optimizes costs and designs efficiently.
- With a global outlook, she creates designs that meet diverse market demands.
- She ensures products exceed expectations, driving mutual success.



# What We Do

Services | Who We Work With | How we do | Testimonials

# Engineered Product Optimization

## ADVANCED ANALYSIS & SIMULATIONS

- **FEA Analysis (Stress, Thermal, Fatigue):** Optimize performance, ensure robustness, and prevent failures in mission-critical components.
- **Topology Optimization:** Reduce material usage while maintaining (or surpassing) strength targets.
- **Materials Simulation:** Assess real-world material performance for harsh environments, long-term use, or vibration concerns.

## MANUFACTURING & ASSEMBLY OPTIMIZATION

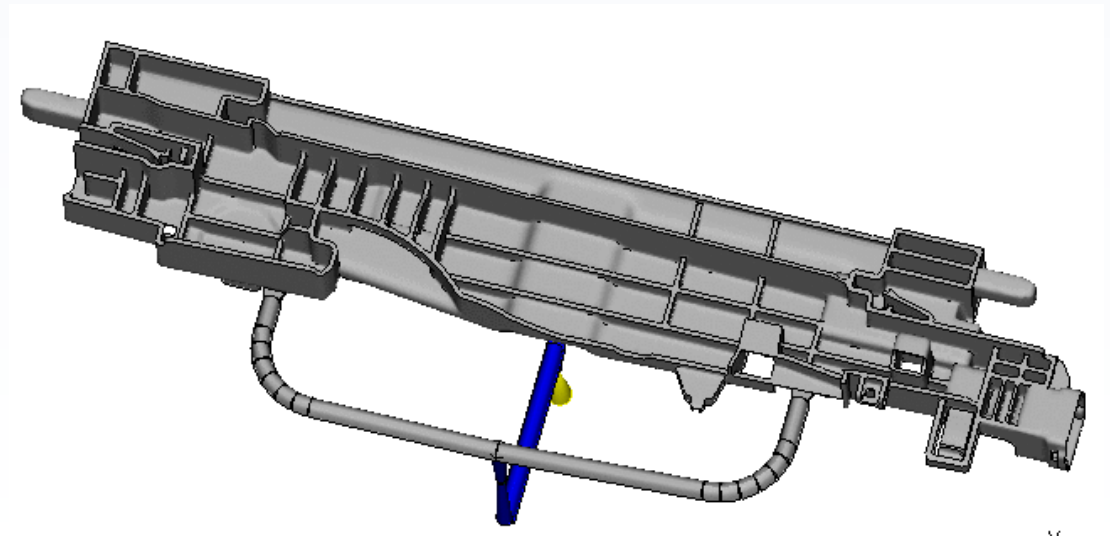
- **DFM Analysis:** Reduce costs & iterations by designing for optimal production processes.
- **DFA Analysis:** Improve product usability and streamline assembly, avoiding costly reworks.
- **Moldflow Analysis:** Ensure flawless injection-molded parts and minimize production defects.
- **Electromechanical Integration:** Optimize cable routing, mounting points, and mitigate vibration while ensuring long-term functionality.

## SUSTAINABLE MATERIALS CONSULTANCY

- **Advanced Polymer Selection:** Find high-performance and recyclable materials tailored to your application.
- **Composite Integration Strategies:** Leverage composites for lightweighting, impact resistance, or unique function in complex parts.
- **Lifecycle Analysis:** Compare material choices based on long-term environmental impact and performance requirements.



**Our engineering expertise in DFM ensures a seamless transition to cost-effective, high-quality production.**



# Turnkey Production Solutions

## STRATEGIC SOURCING & MATERIAL PROCUREMENT

- **Strategic Supplier Network (China & Taiwan):** Leverage our vetted, high-quality manufacturers for the optimal fit with your technical & scale requirements.
- **Manufacturing Method Selection:** Expert guidance on injection molding, composites, die-casting, etc. ensuring quality and cost effectiveness.
- **Tooling Procurement & Management:** Oversee the design, fabrication, and quality testing of all required production tooling.

## FULL-SCALE PRODUCTION & LOGISTICS

- **Production Ramp-Up Support:** On-site presence during launch to minimize delays, troubleshoot tooling issues, and optimize processes.
- **Global Logistics Management:** Navigate the complexities of shipping, international documentation, and delivery to your facility.
- **End-to-End Quality Assurance:** Rigorous inspection standards applied throughout the entire supply chain ensuring your product meets specifications.

## BEYOND PRODUCTION: ADDITIONAL SUPPORT

- **Product Certification Assistance:** Navigate global safety standards and product testing requirements.
- **Contract Manufacturing Negotiation:** Ensure clear cost structure and terms between you and overseas production partners.
- **Intellectual Property Protections:** Advise on safeguarding your IP (design patents, etc.) within international partnerships.

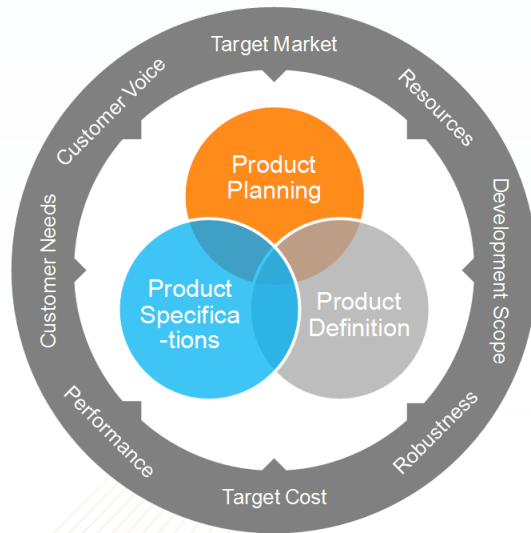
# Who we work with

We've been known to partner with clients of all sizes, shapes, and forms – from funded startups and small mid businesses to large corporations and government organizations, covering a variety of B2B sectors.

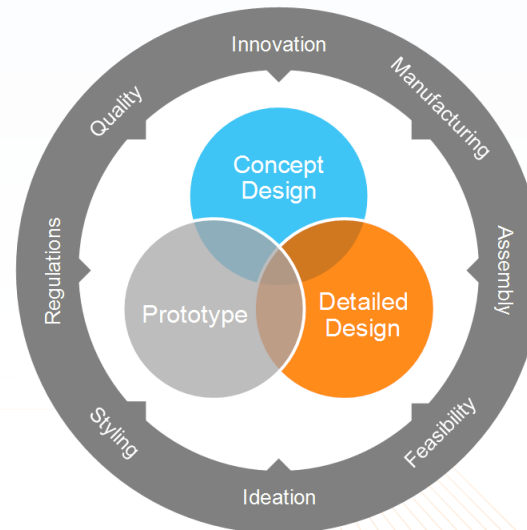


# How do we do?

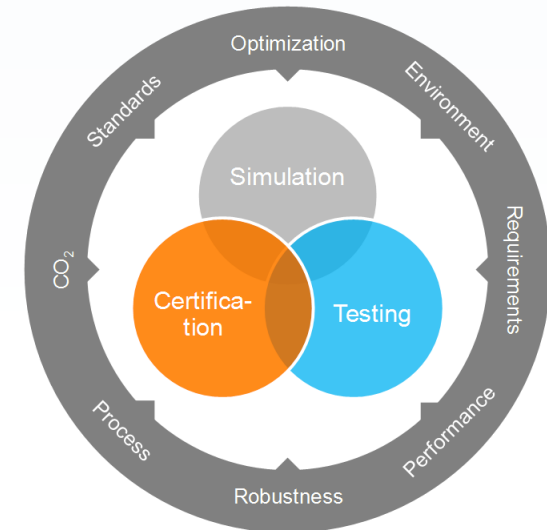
- Flexible product planning allows for adaptability and responsiveness during the development process, while accurate product definition establishes a solid foundation and shared vision.



Product Definition



Product Development



Product Validation

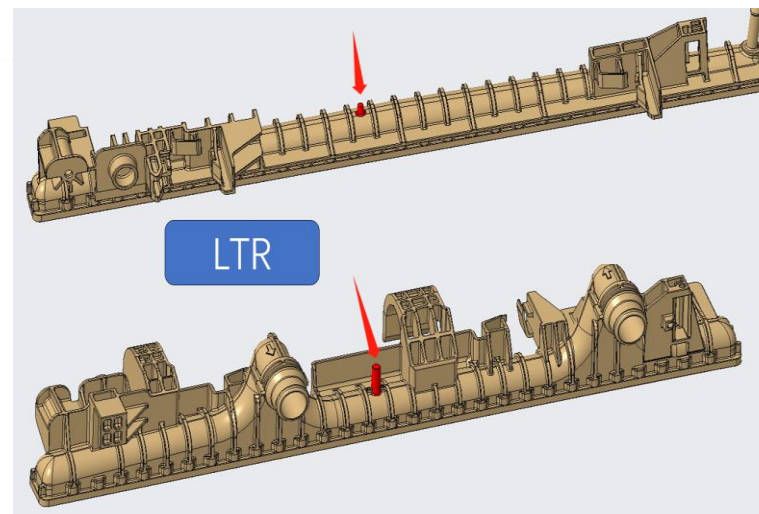
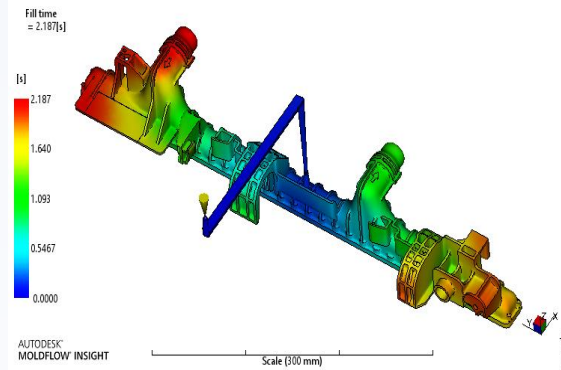
# Our Work

Ficosa | WCSensor | VelyVelo | SmartBox | Carbi | Robkey



# Automotive Prototyping

In automotive components prototyping, we blend advanced technology with meticulous attention to detail to deliver high-quality prototypes efficiently. From concept to prototype, our streamlined process accelerates development timelines, ensuring precision and functionality across a range of components.

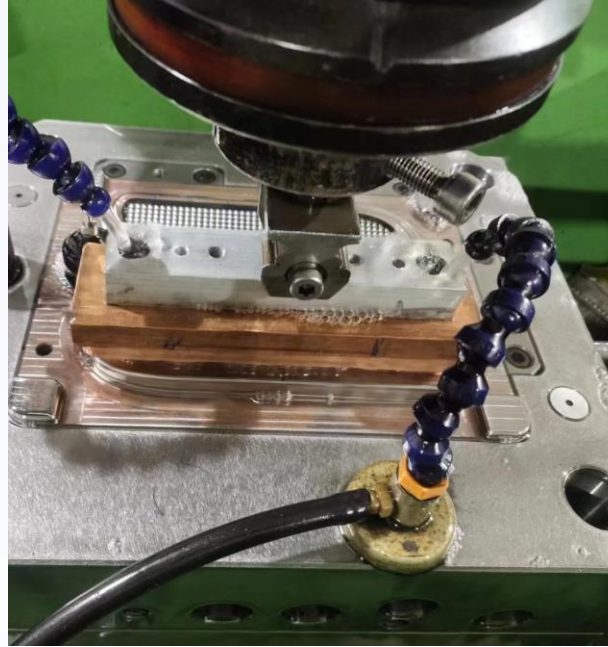




# Automotive Export tools

For mass production tooling export, we offer turnkey solutions tailored to streamline production processes and enhance operational efficiency. Leveraging our extensive network, we source high-quality tooling equipment and provide comprehensive support for seamless integration into clients' manufacturing facilities, earning us the trust of automotive manufacturers worldwide.

**ideambox**

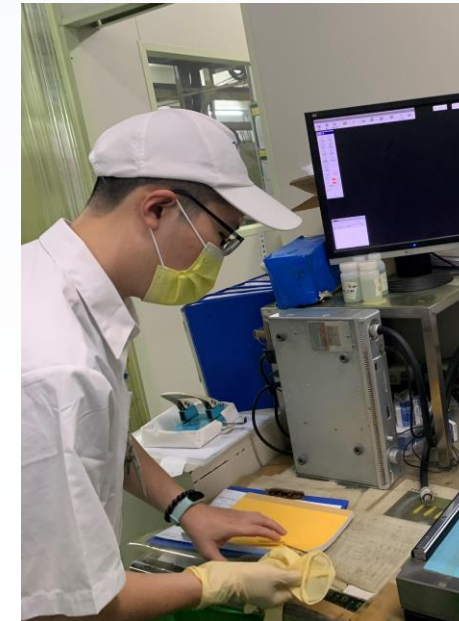
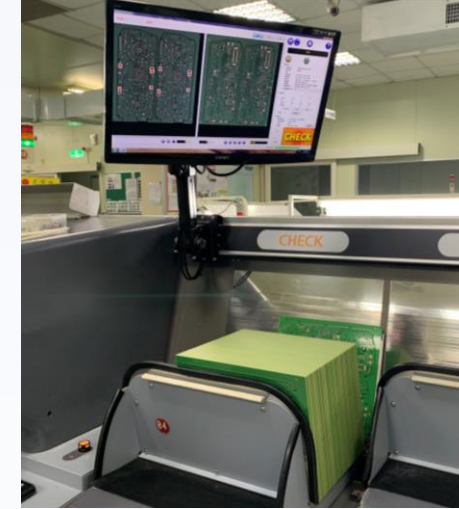




# Supplier Management

A top-tier global provider devoted to the research, development, manufacturing, and marketing of advanced technology vision, safety, connectivity, and efficiency systems for the motor and mobility sectors.

We have been working alongside the Ficosa team for quality and production audits at a global electronics supplier in Taiwan. And developed concept designs and prototype parts for demo cars and product showrooms.



# Product Development

A universal device for WC, that does not require contact and that offers the possibility of regulating and calibrating the amount of water used in each flush when flushing the toilet cistern. With a savings of more than 70% of water.

We have worked alongside WCSensor for the mechanical design, prototyping and industrialization of all the plastic parts. And provided support with the sourcing of some of the electronic components.

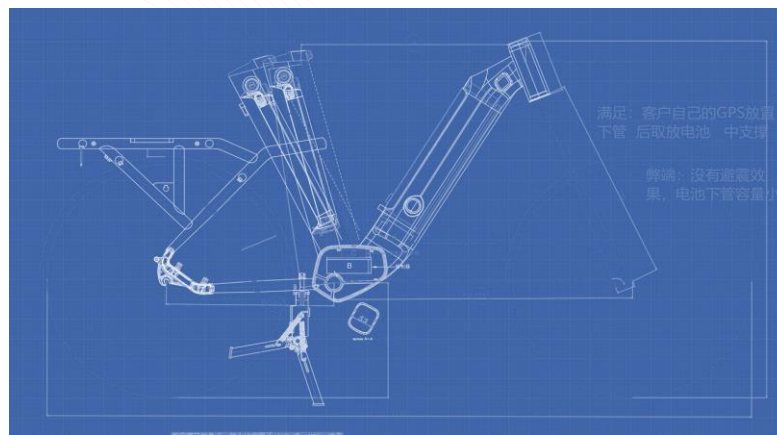
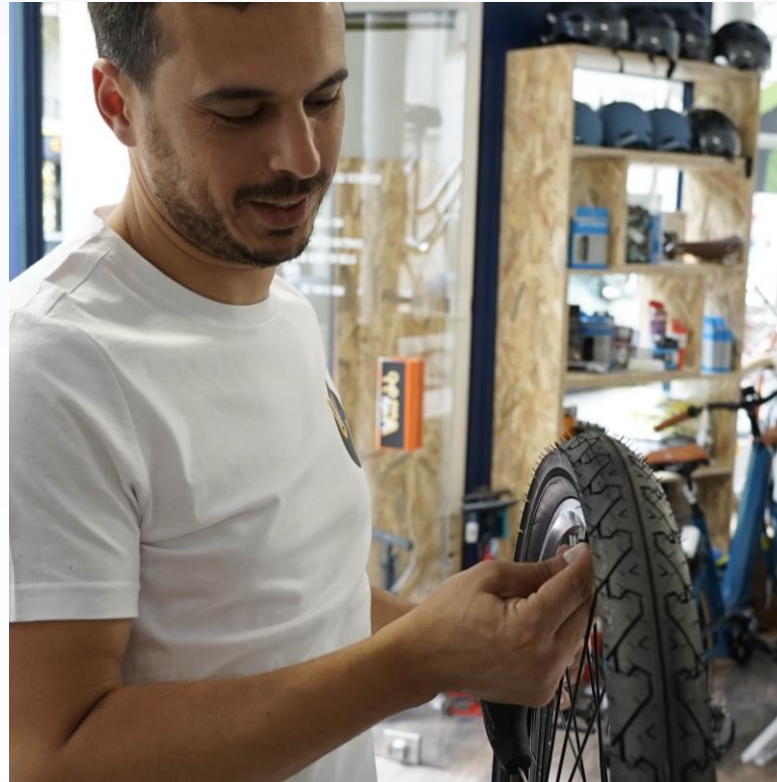




# Key Supplier Development

VelyVelo is the specialist in long-term rental (LLD) without commitment / leasing of electric bicycles (long range, two-wheeler, tricycle / three-wheeler and cargo bike) with fleet management and maintenance for delivery professionals in Paris and throughout France.

We worked alongside VelyVelo to design, prototype and manufacture their ultimate delivery bike, new generation.



**ideambox**



✉ [info@ideambox.com](mailto:info@ideambox.com)

[www.ideambox.com](http://www.ideambox.com)



☎ +886 900 671 831 (TW) • +34 616 688 117 (ES)

Unit 1109, 33 Canton Rd., Tsim Sha Tsui, Hong Kong

